

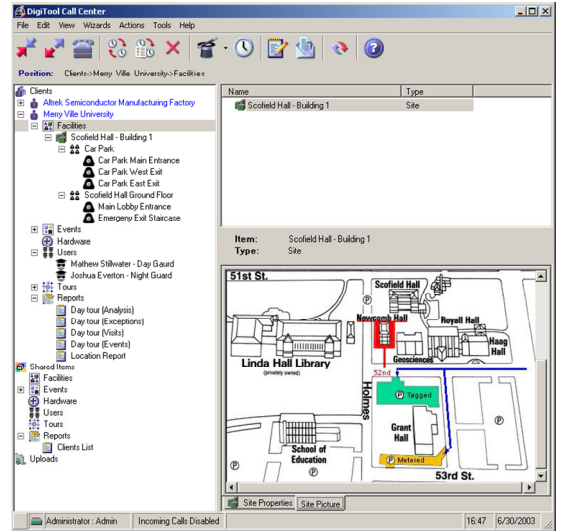
Compatibility: The GS-02 , DigiTool™ Call Center PC Software is a complete Guard Patrol Touring Solution for large scale distributed modem up/downloader points "Stations" used to manage clients, reports, tours, of over 500 patrolling guards over a geographic area with up to 10,000 Locations.

GENERAL DESCRIPTION

The GS-02 DigiTool™ PC Software was developed with technology for Guard Patrol monitoring and Client Management from the leading guard patrol, security services, bringing over 20 years of experience together to create a new feel for Guard Patrol Management.



inter



Model : GS-02 "Call Center"

MAIN FEATURES

Developed using the newest state of the art Microsoft .Net "Dot Net" software development system for 32-Bit Real Time Applications, the GS-02 has a full featured expandable graphical interface that runs on Personal Computers with Microsoft Windows Xp/NT/2000 and 98/Me Operating Systems.

OPERATIONAL DESCRIPTION

The GS-02 DigiTool™ PC Software provides a full featured management interface enabling the Guard Company to manage the system's Clients, Facilities, Sites, Location Groups, Registered Locations, Pre Registered Events, Numerical Events, Assigned Hardware Serial Numbers, Guards Personal Files, Tours Assignments, and Reports Generation and transmittal.

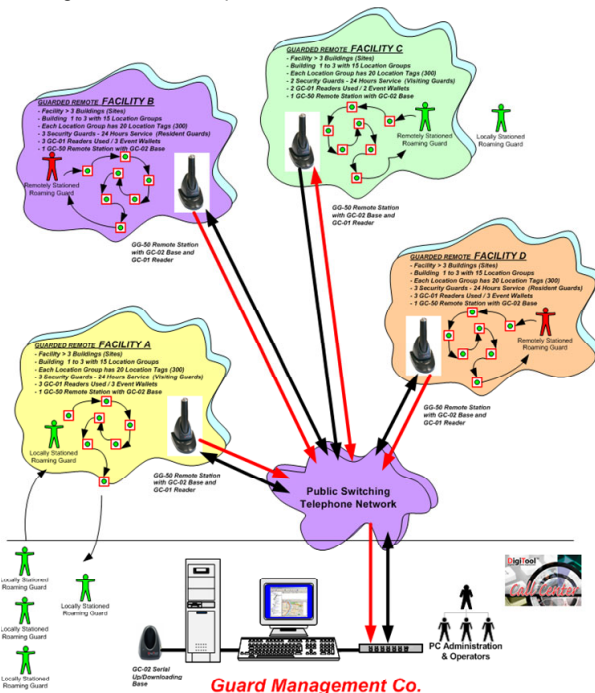
Custom Security Codes for Each PC: DigiTool™ can be configured to bring ownership of remote hardware to the specific PC so that another hack PC is locked out of communication.

Full Featured MS Access Database with SQL Upgrade: The standard set of licenses for the GS-02 work with a non license MS Access Database suitable for most applications. For very large systems, our developers can provide a customized SQL Database support for your application.

Advanced 32-Bit Microsoft .Net Platform: Enjoy all of the newest software features from Microsoft's ultra smart .dot NET architecture. Makes for even a smoother running platform than ever **Modem Management System with Task Scheduler:** This feature allows the scheduling of Reports Transmission by email, up/downloading remote stations by either dial out, call back, or scheduled call in. The scheduler saves time and money by allowing the system to function without a full time operator on the PC.

Object Orientated Software Architecture: GS-02 provides the system logic for managing Clients as a logical entity with all relational objects shown on a tree view. You can copy, edit, drag and drop objects by using the mouse.

User friendly operation: Important most of all is the user experience of using the system, with a full Wizard based system, learning to operate the software even to advanced levels is an enjoyable and smooth process.



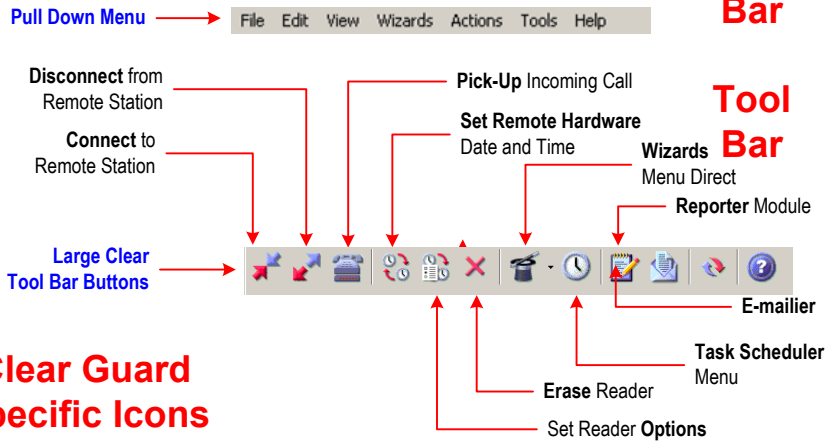
Desktop Icon



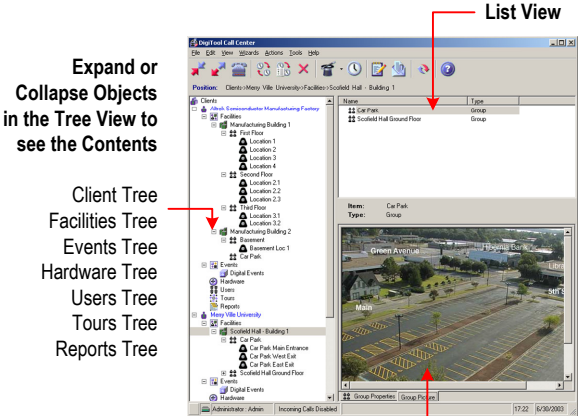
SPLASH SCREEN



MENU BAR AND TOOL BAR



APPLICATION MAIN SCREEN

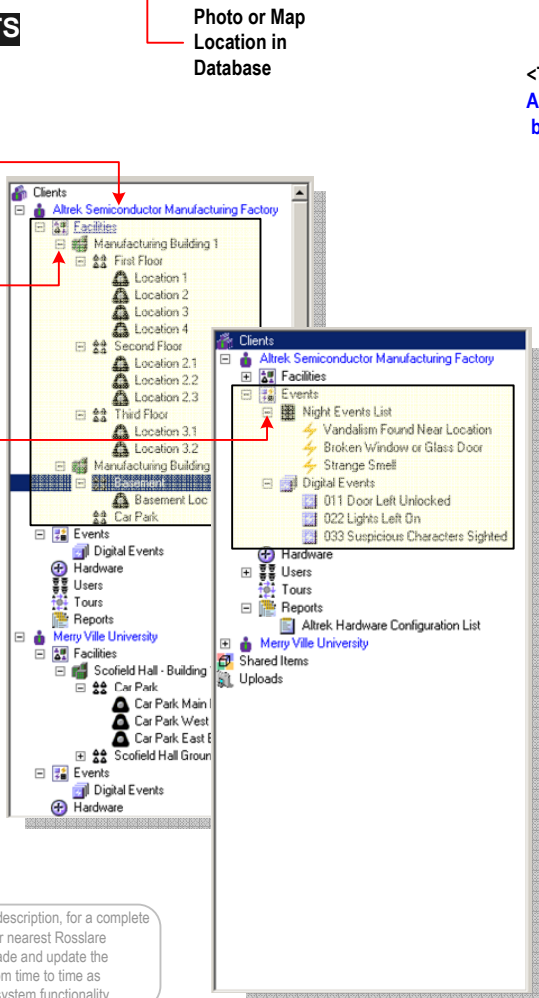


TREE VIEW OBJECTS

Client Tree Contains the particular client's Facilities, Events, Hardware, Users, Tours, and Reports

Expanded Facilities Tree Shows Sites, Groups and Locations

Expanded Events Tree Shows all assigned event wallets, Event Tags, and Numerical Event Codes.



Browse the Tree View

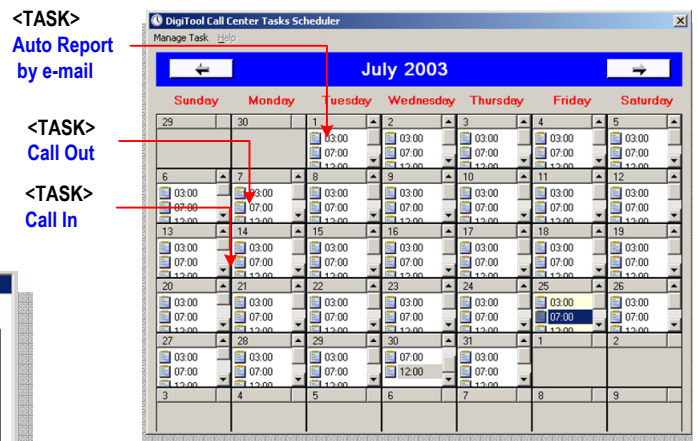
Right Click for Wizards

Show or Hide any Object

Important Note: This Leaflet is only a general description, for a complete manual and demonstration version, contact your nearest Rosslare Distributor. Rosslare reserves the right to upgrade and update the GS-02 Software Versions and Specifications from time to time as deemed necessary for the improvement of the system functionality

AUTOMATIC TASK SCHEDULER

Plan a list of scheduled Tasks



REPORTER APPLICATION

View Reports in Advance

